

at the Support Office.

Nursing care

Returning to work after maternity /child-rearing leave

Leave systems

Troubles and difficulties in work due to diversity issues

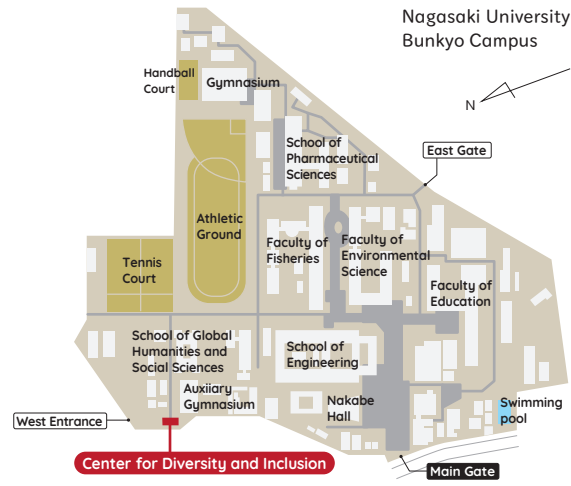
Publications of the Center for Diversity and Inclusion

女性優遇?
長崎大学は本気でやります。

LGBT+ Guidelines

Role Models Collection

Publications of the Center for Diversity and Inclusion



Nagasaki University Center for Diversity and Inclusion
[nicknamed the OMOYAI Center]

omoyai_staff@ml.nagasaki-u.ac.jp
1-14, Bunkyo-machi,
Nagasaki 852-8521
TEL: +81-95-819-2889
FAX: +81-95-819-2159

Currently accepting new infants and children

Omoyai Nursery School
[On the Bunkyo Campus]

TEL: +81-95-819-2889
Center for Diversity and Inclusion

Nagasaki University
Center for Diversity and Inclusion



Women Researchers Support Office Guidebook



Come and talk to us

Child-rearing

Regarding careers

Human relations at work

Nagasaki University's support systems

What does the Women Researchers Support Office do?

Ministry of Education, Culture, Sports, Science and Technology (MEXT)
The Funds for the Development of Human resources in Science and Technology
"Initiative for Realizing Diversity in the Research Environment (Advanced Type)"

Women Researchers Support Office's Six initiatives

Through these initiatives we support the creation of a base for promotion appointments, research ability improvements and the fostering of young researchers.

1 Subsidies for Women Researchers to Study/Research Overseas

The Support Office targets equipping women researchers with sophisticated research abilities, international mindsets and leadership skills through the experience of dedicating themselves to research at overseas research and education institutions.



Comment from a grant recipient

I received a research grant from the Subsidies for Women Researchers on Studying/Doing Research Overseas, and conducted research in the US. As the journey was made while I was busy with work I only stayed for one week, but I was able to conduct valuable interviews with the research targets, gather documents only available in the places I visited, and greatly further my research. I

felt that this internal system aimed at female faculty not only ties in easily to greater volition to tackle research issues and more chances than other external systems, and also provides the opportunity to encourage the lives of women researchers and dramatically improve them. [Associate Professor, Faculty of Education]

2 Subsidies for Women Researchers on Copy Editing Theses in English

Partial support is provided for the copy editing expenses required for English language papers compiling the results of overseas research or possibly leading researchers to study or research overseas. The Support Office aims to expand opportunities for submitting papers and giving presentations at academic conferences, as well as bolstering the research ability of the University's women researchers and improving their international level of recognition.



Comment from a grant recipient

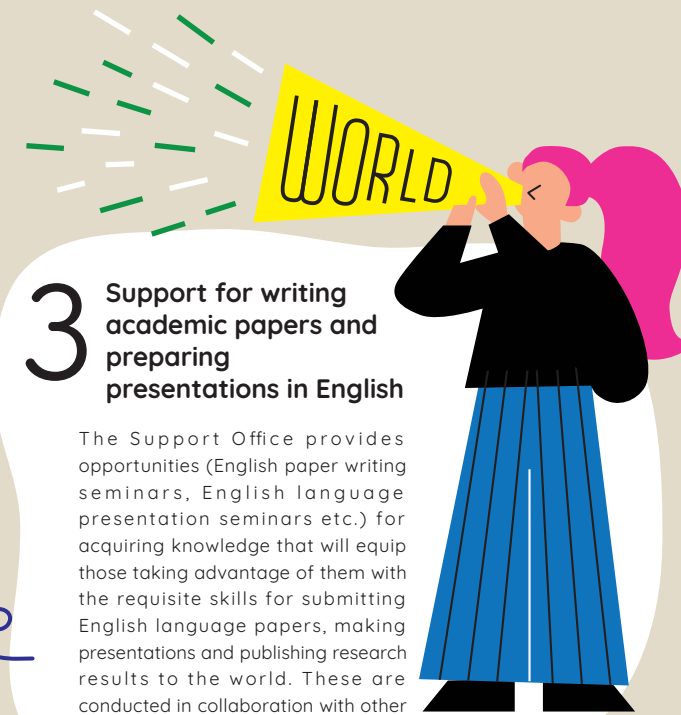
My target for this academic year is submitting to international journals academic papers on my own research results and those written by the doctoral students whose research I supervise. I am eager to compile the papers and be sure not to miss this fantastic and unexpected chance to receive support! Thanks to the subsidies my motivation has been boosted. The publishing of research results in international academic journals is a vital step in improving science and technology and contributing to the

building up of the universal body of knowledge. However, the fact is that finding time to concentrate on the writing of academic papers is difficult. Gaining support in the creation of English language papers is something I am obviously very grateful for in financial terms and from the sense of saving precious time. With the target of raising the University's level of international recognition, I intend to devote myself to study in the future too. [Associate Professor, Graduate School of Biomedical Sciences]



3 Support for writing academic papers and preparing presentations in English

The Support Office provides opportunities (English paper writing seminars, English language presentation seminars etc.) for acquiring knowledge that will equip those taking advantage of them with the requisite skills for submitting English language papers, making presentations and publishing research results to the world. These are conducted in collaboration with other departments of the University.



Women Researchers Support!

4 Fostering of young researchers

Through the publishing of role model collections and seminars, the Support Office builds a foundation for fostering the women researchers of the future.



5 Women researchers' network

Lunch seminars and study groups are held, providing a forum for making cross-organizational connections between the University's women researchers.



6 Nagasaki University Women Researchers Award

Through the presentation of the awards by the University President to women researchers at the University who have achieved particularly excellent research results, we aim to raise the research motivation not only of recipients but of all young researchers, and encourage the fostering of researchers and gender equality.



Career consultation for women researchers

We provide consultation for researchers and women staff so that they can continue to pursue their work or research.

- Those eligible** Women staff and graduate students at the University
- Consultants** Diversity and Inclusion Center staff
- Confidentiality** In order to protect privacy we stringently observe our obligation to confidentiality regarding individual information and the content of all consultations. You can talk to us with complete peace of mind.

STEP1

Please apply beforehand by e-mail or telephone

E-mail omoyai_soudan@ml.nagasaki-u.ac.jp
TEL +81-95-819-2889

[Information to be provided in advance]
 Name/affiliation/contact point (telephone or e-mail)
 Preferred date of consultation/content (not necessarily specific)

STEP2

The person-in-charge will contact you.

STEP3

Decision on date, time and place

*Staff will consider with you the requisite support and information
 *You may be referred to other divisions when necessary



There is also an extensive range of support for other life events

For All staff

- Carers support**
 - Individual consultation with Nursing Care Concierges
 - Workshop for Caregivers

- Child-rearing support**
 - Omoyai Nursery School
 - OMOYAI Kids (on-campus childcare for school-age children during the summer school holiday)

- Work style**
 - Work Style Innovation Program

For Researchers

- Carers support**
 - Technical Staff Employment System
- Child-rearing support**
 - Restart-up Research Funding